

<u>Code</u>	<u>Purchase Date</u>	<u>Purchase Price (\$)</u>	<u>Last (\$)</u>	<u>Units</u>	<u>Market Value (\$)</u>	<u>Profit / Loss (\$)</u>	<u>Change (%)</u>
JIN	20/08/2018	6.1	23.86	1000	23,860.00	17,760.00	291.15
SSM	11/02/2019	2.23	2.73	3829	10,453.17	1,914.50	22.42
PME	11/02/2019	13.56	29.02	528	15,322.56	8,162.88	114.01
PNV	11/02/2019	0.7	2.24	11000	24,640.00	16,940.00	220
IFM	18/02/2019	1.41	2.07	4850	10,039.50	3,201.00	46.81
IPH	25/02/2019	6.14	8.78	1400	12,292.00	3,696.00	43
DDR	4/03/2019	3.42	7.7	3930	30,261.00	16,820.40	125.15
HVN	4/03/2019	3.75	4.56	2550	11,628.00	2,065.50	21.6
CKF	29/04/2019	7.59	9.85	1350	13,297.50	3,051.00	29.78
IDX	13/05/2019	3.25	3.25	2950	9,587.50	0	0
ALK	17/06/2019	0.42	0.78	12160	9,484.80	4,377.60	85.71
CMP	24/06/2019	0.65	0.56	10872	6,088.32	-978.48	-13.85
MML	24/06/2019	0.585	0.825	12910	10,650.75	3,098.40	41.03
AFG	8/07/2019	1.71	2.33	5158	12,018.14	3,197.96	36.26
CDA	8/07/2019	3.74	5.11	3341	17,072.51	4,577.17	36.63
RMC	29/07/2019	0.795	0.91	14174	12,898.34	1,630.01	14.47
JMS	12/08/2019	0.385	0.415	20200	8,383.00	606	7.79
MPL	19/08/2019	3.45	3.43	4634	15,894.62	-92.68	-0.58
IMD	19/08/2019	1.22	1.425	6094	8,683.95	1,249.27	16.8
ALK	26/08/2019	0.4	0.78	15600	12,168.00	5,928.00	95
AVH	9/09/2019	0.52	0.605	9978	6,036.69	848.13	16.35
Z1P	9/09/2019	3.94	3.59	1530	5,492.70	-535.5	-8.88
KGN	9/09/2019	6.8	6.24	1122	7,001.28	-628.32	-8.24
BBN	16/09/2019	3.56	3.32	2600	8,632.00	-624	-6.74
MNF	16/09/2019	5.07	5.02	1960	9,839.20	-98	-0.99
MRC	16/09/2019	0.215	0.195	17600	3,432.00	-352	-9.3
Total					315,157.53	95,814.84	43.683

Cash held 325.00

(cents are rounded to the nearest dollar)

Trading profit (current) 95,815

Add Dividends Received 10,343

Less brokerage 1,546

Total value adding portfolio value, cash and dividends, and minus brokerage is: 324,280

Note: this system is different to the eBook system, please read carefully.

This system uses the 52 week high signal as its primary entry, in conjunction with a Bull filter.

The Bull filter rule is the weekly close of the XMD must be above the 24 EMA and the 6EMA.

This is a slower more conservative filter than the eBook Bull filter, it is not a "better" filter but one I have been using for many years and it suits my objective. It was designed to be used in conjunction with a Bear filter, which I no longer use.

The 52 week high entry is used in conjunction with a momentum filter. The momentum filter measures stock speed, so some 52 week high signals will not be bought until the

stock meets the momentum criteria.

An example of this can be seen below with the stock DDR.

Pullback entry: Rarely, some stocks are bought on a pullback from the 52 week high entry.

Pullback entries normally happen when the market falls, some stocks never pullback after the original 52 week high signal. Pullbacks are bought only if it happens and if the portfolio has the cash to buy, which often it does not. The pullback entry does not make more profit for the system, however it can smooth the equity curve.

Examples of pullback entries can be seen of the charts below.

Sizing: this system uses ATR sizing not percent of equity sizing like the eBook does.

There is no "better" sizing method. ATR sizing is my preference and suits my objective.

System exit: the exit is the same as the eBook system.

Variables within a system do not "make" a system or create out performance.

What gives good results is discipline, sticking to a system for a period of time to test the rules as well as the operators performance, the most important factor.

Stock List: stocks to buy are sourced using my fundamental "Castle" criteria scan.

Information such as ATR sizing, dip buy rules, momentum criteria and the Castle stock selection criteria is withheld in this PDF file and provided to private clients only.

Trades this week:

SAR was sold at 3.41 raising \$5,616 in capital

WTC was sold at 33.82 using a profit preserve rule. Capital raised \$10,992 (rounded up)

Profit Preserve targets are taught to private clients only, or at my seminars

BBN was bought costing \$9,256

MNF was bought costing \$9,937

MRC was bought using the dip buy rule costing \$3,784

(a part position of MRC was bought as funds not available to buy a full position)

Total cost of buys \$22,977

Total of capital raised \$16,608

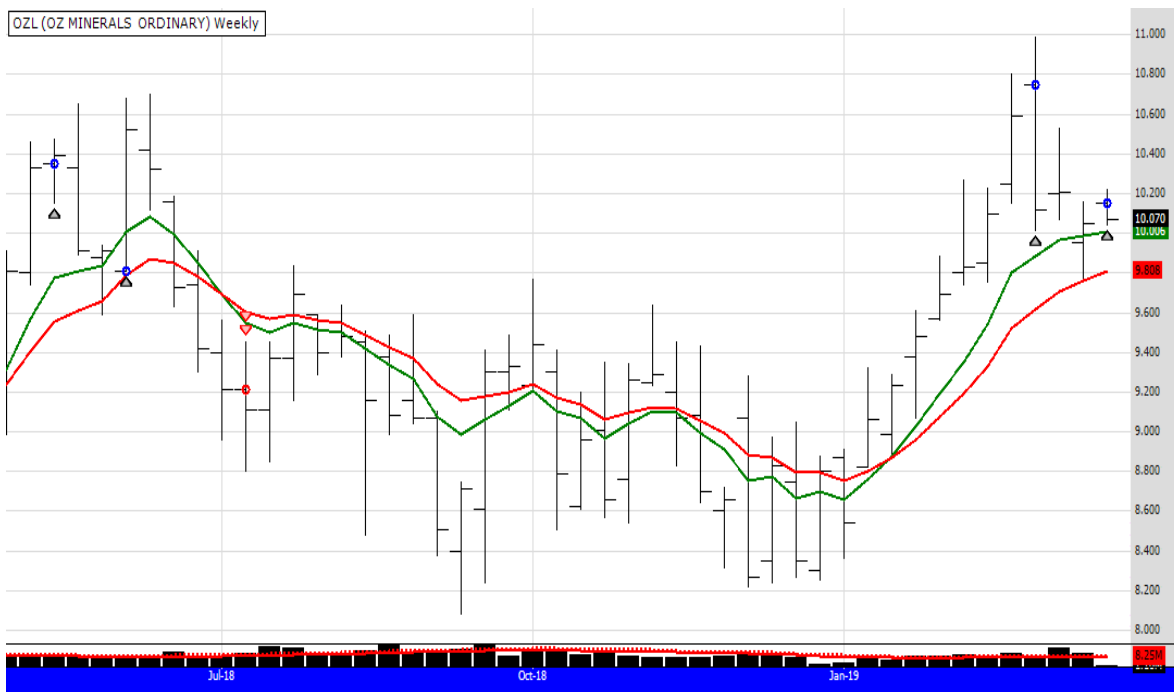
This system occasionally buys a stock after it has dipped from its original 52 week high

There are some charts below explaining this methodology

Dividends (I add dividends on the ex date)

SSM paid a div of 0.055 raising \$211 (rounded up)

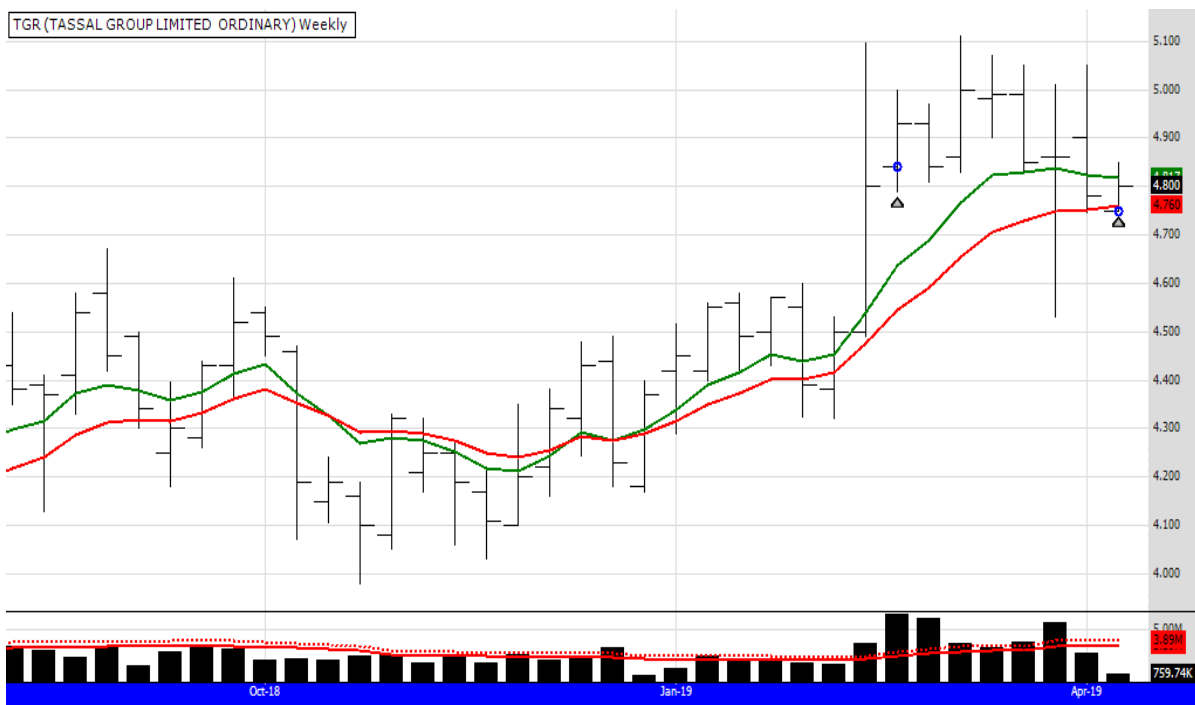
The rules of this system allow a buy after a pullback, here are some example charts of stocks bought on the 18th March 2019



OZL signalled a buy a months ago, it was not bought because it did not meet the Castle fundamental list, however it is listed as a Stock Doctor star stock so I am giving it a go. In the chart above the first blue dot is the 52 week closing high and the 2nd blue dot the pull back entry. As you can see the previous trade failed, it does not always work.

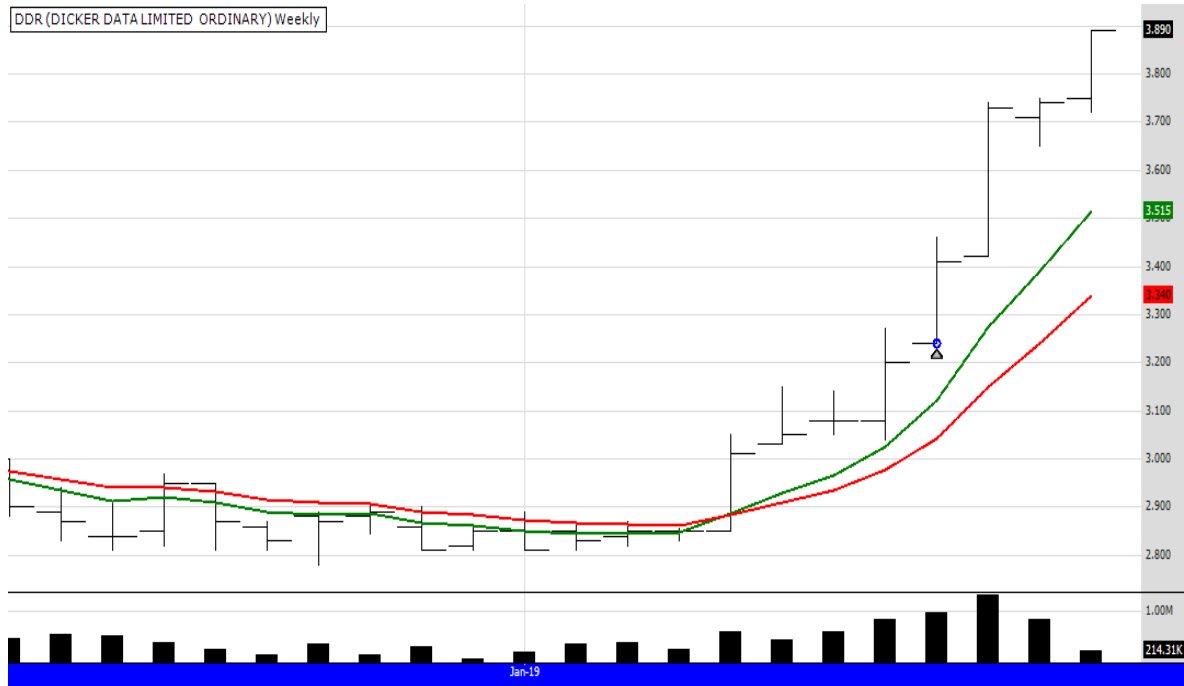
OZL was sold on 13/5/19 as the experimental star stock failed.

TGR is another example using the same rule

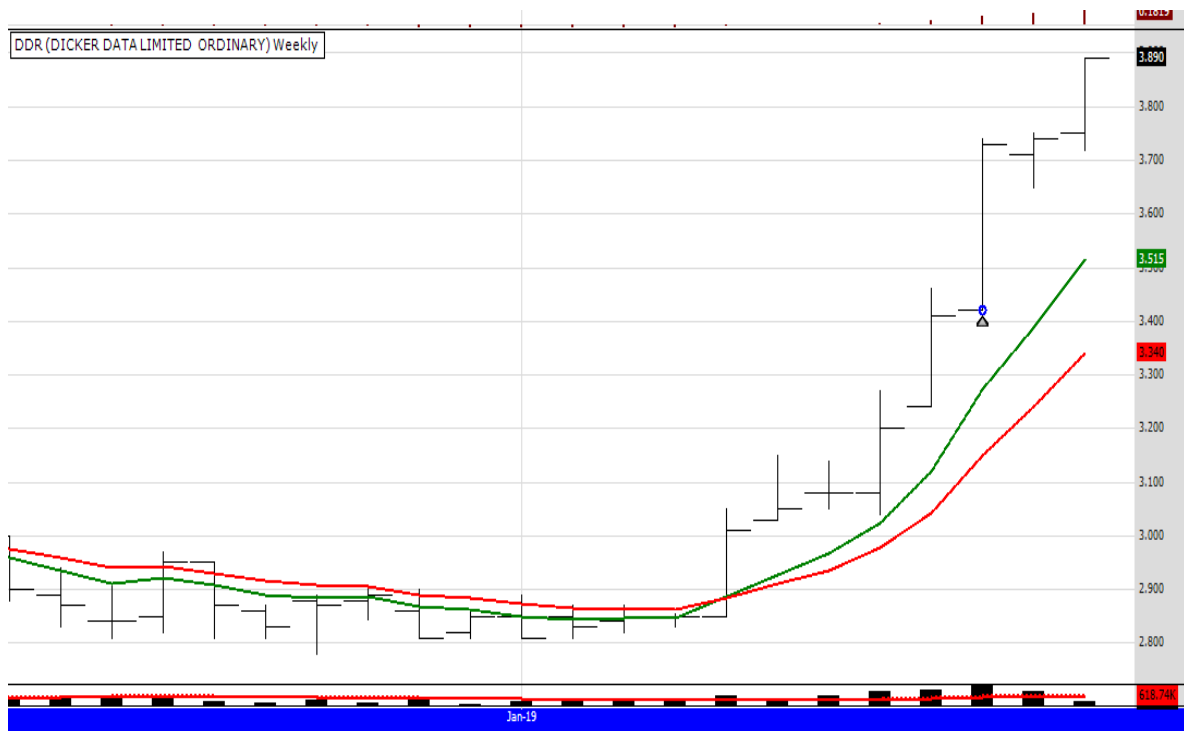


TGR signalled the 52 week closing high but went sideways and then dipped a little, meeting the rules of the dip buy and so the 2nd position was bought.

Note: VOC and CHC were stocks that were bought using the pull back buy rule.
 VOC has been stopped out and CHC is still an open trade in the system.
 Those charts can be viewed in earlier portfolio PDF files on the website.

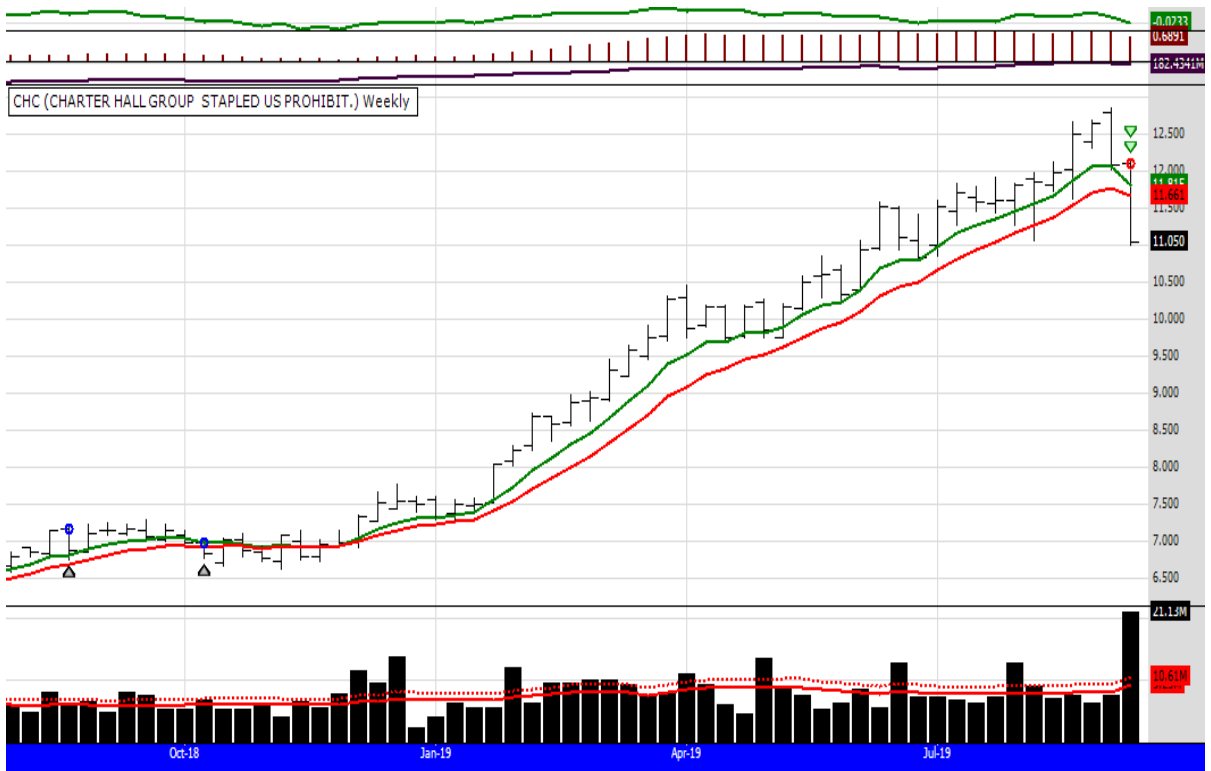


The chart above shows DDR signalling a buy in the eBook system, the buy price was 3.24
 The chart below shows DDR signalling the same buy but using a momentum filter, you can see the buy was delayed and bought even higher than the original 52 week high signal. In this case, using the momentum filter, the stock was bought at 3.42





A2M signalled a 52 week closing high in late Feb. The stock rose but has now fallen and pulled back below the original buy price. The trade is still "open" as the exit signal has not been triggered. The stock currently meets the rules for a "dip buy" and a second position has been purchased at the open on Tuesday the 11th June (the 10th was a public holiday)
 Note: this stock was stopped out only 2 weeks later on the 24th June.



A2M signalled a 52 week closing high in late Feb. The stock rose but has now fallen and pulled back below the original buy price. The trade is still "open" as the exit signal has not been triggered. The stock currently meets the rules for a "dip buy" and a second position has been purchased at the open on Tuesday the 11th June (the 10th was a public holiday)





