

<u>Code</u>	<u>Purchase Date</u>	<u>Purchase Price (\$)</u>	<u>Last (\$)</u>	<u>Units</u>	<u>Market Value (\$)</u>	<u>Profit / Loss (\$)</u>	<u>Change (%)</u>
<a href="#">CUV</a>	6/08/2018	13	38.55	394	15,188.70	10,066.70	196.54
<a href="#">JIN</a>	20/08/2018	6.1	20.41	1000	20,410.00	14,310.00	234.59
<a href="#">CHC</a>	5/11/2018	6.73	11.11	2150	23,886.50	9,417.00	65.08
<a href="#">VOC</a>	17/12/2018	3.18	3.2	1900	6,080.00	38	0.63
<a href="#">SSM</a>	11/02/2019	2.23	2.75	3829	10,529.75	1,991.08	23.32
<a href="#">PME</a>	11/02/2019	13.56	26	528	13,728.00	6,568.32	91.74
<a href="#">PNV</a>	11/02/2019	0.7	1.48	11000	16,280.00	8,580.00	111.43
<a href="#">WTC</a>	18/02/2019	22.74	28.44	325	9,243.00	1,852.50	25.07
<a href="#">BVS</a>	18/02/2019	4.7	5.4	1760	9,504.00	1,232.00	14.89
<a href="#">IFM</a>	18/02/2019	1.41	1.7	4850	8,245.00	1,406.50	20.57
<a href="#">A2M</a>	25/02/2019	13.96	13.22	540	7,138.80	-399.6	-5.3
<a href="#">IPH</a>	25/02/2019	6.14	7.61	1400	10,654.00	2,058.00	23.94
<a href="#">MND</a>	25/02/2019	17.42	18.52	544	10,074.88	598.4	6.31
<a href="#">CLV</a>	25/02/2019	1.765	2.05	3850	7,892.50	1,097.25	16.15
<a href="#">DDR</a>	4/03/2019	3.42	4.87	3930	19,139.10	5,698.50	42.4
<a href="#">HVN</a>	4/03/2019	3.75	4.06	2550	10,353.00	790.5	8.27
<a href="#">BRG</a>	4/03/2019	16.28	16.37	300	4,911.00	27	0.55
<a href="#">TGR</a>	8/04/2019	4.75	5	2112	10,560.00	528	5.26
<a href="#">CKF</a>	29/04/2019	7.59	7.62	1350	10,287.00	40.5	0.4
<a href="#">IDX</a>	13/05/2019	3.25	3.14	2950	9,263.00	-324.5	-3.38
<a href="#">A2M</a>	11/06/2019	13.65	13.22	636	8,407.92	-273.48	-3.15
<a href="#">DN8</a>	17/06/2019	0.145	0.135	40500	5,467.50	-405	-6.9
<a href="#">ALK</a>	17/06/2019	0.42	0.425	12160	5,168.00	60.8	1.19
<b>Total</b>					<b>252,411.65</b>	<b>64,958.47</b>	<b>34.653</b>

Starting Capital 200,000

Cash held 9,729.00

(cents are rounded to the nearest dollar)

Trading profit (current) 64,958

Add Dividends Received 7,889

Less brokerage 1,345

**Total value adding portfolio value, cash and dividends 268,685**

**Note: this system is different to the eBook system, please read carefully.**

This system uses the 52 week high signal as its primary entry, in conjunction with a Bull filter.

The Bull filter rule is the weekly close of the XMD must be above the 24 EMA and the 6EMA.

This is a slower more conservative filter than the eBook Bull filter, it is not a "better" filter but one I have been using for many years and it suits my objective. It was designed to be used in conjunction with a Bear filter, which I no longer use.

The 52 week high entry is used in conjunction with a momentum filter. The momentum filter measures stock speed, so some 52 week high signals will not be bought until the

stock meets the momentum criteria.

An example of this can be seen below with the stock DDR.

Pullback entry: Rarely some stocks are bought on a pullback from the 52 week high entry.

Pullback entries normally happen when the market falls, some stocks never pullback after the original 52 week high signal. Pullbacks are bought only if it happens and if the portfolio has the cash to buy, which often it does not. The pullback entry does not make more profit for the system, however it can smooth the equity curve.

Examples of pullback entries can be seen of the charts below.

Sizing: this system uses ATR sizing not percent of equity sizing like the eBook does.

**There is no "better" sizing method. ATR sizing is my preference and suits my objective.**

System exit: the exit is the same as the eBook system.

**Variables within a system do not "make" a system or create out performance.**

**What gives good results is discipline, sticking to a system for a period of time to test the rules as well as the operators performance, the most important factor.**

**Stock List: stocks to buy are sourced using my fundamental "Castle" criteria scan.**

**Information such as ATR sizing, dip buy rules, momentum criteria and the Castle stock selection criteria is withheld in this PDF file and provided to private clients only.**

**Trades this week:**

VRL was sold at 2.80 raising \$9968

VTG was sold at 1.18 raising \$5310

Total capital raised \$15278

ALK (12160) was bought costing \$5,107

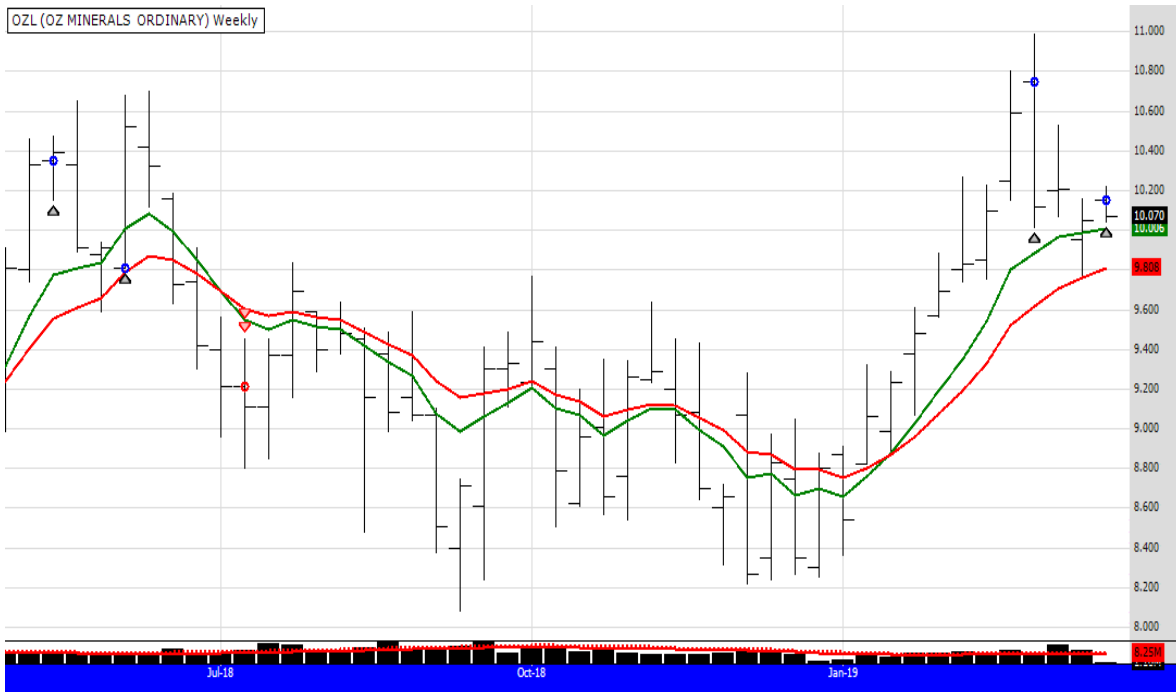
DN8 (40500) was bought costing \$5,872

Total cost of buys \$10,979

Dividends this week:

None

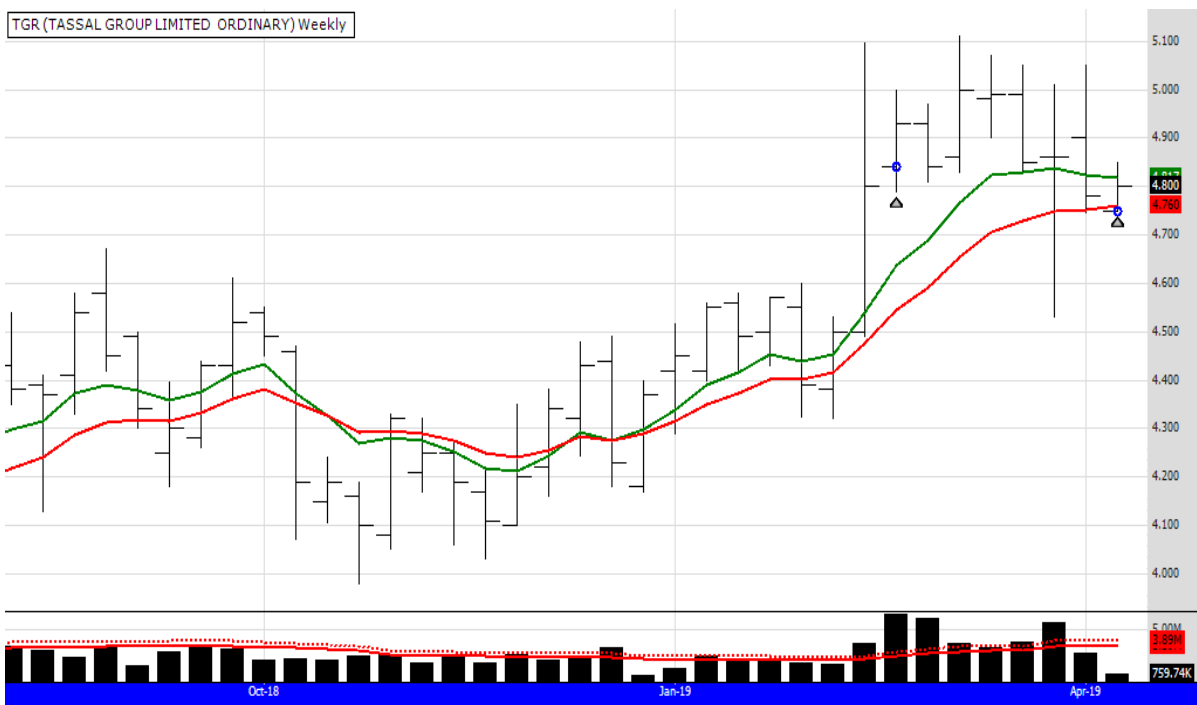
The rules of this system allow a buy after a pullback, here are some example charts of stocks bought on the 18th March 2019



OZL signalled a buy a months ago, it was not bought because it did not meet the Castle fundamental list, however it is listed as a Stock Doctor star stock so I am giving it a go. In the chart above the first blue dot is the 52 week closing high and the 2nd blue dot the pull back entry. As you can see the previous trade failed, it does not always work.

OZL was sold on 13/5/19 as the experimental star stock failed.

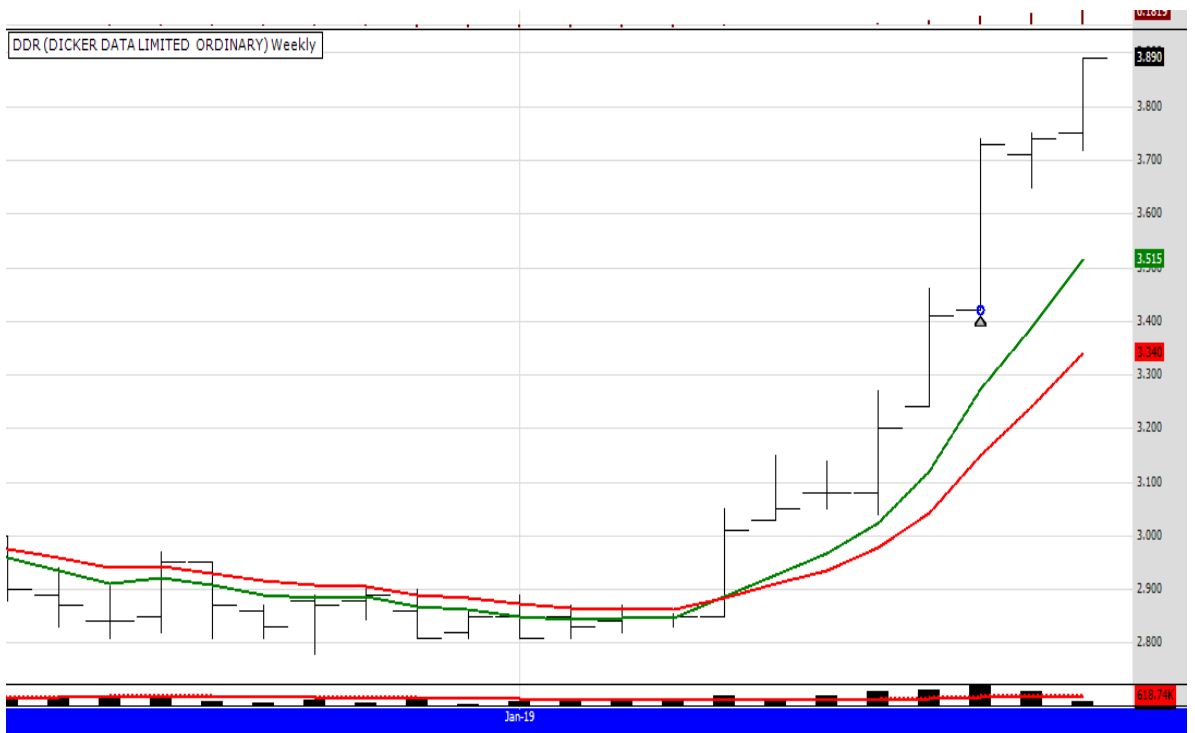
TGR is another example using the same rule

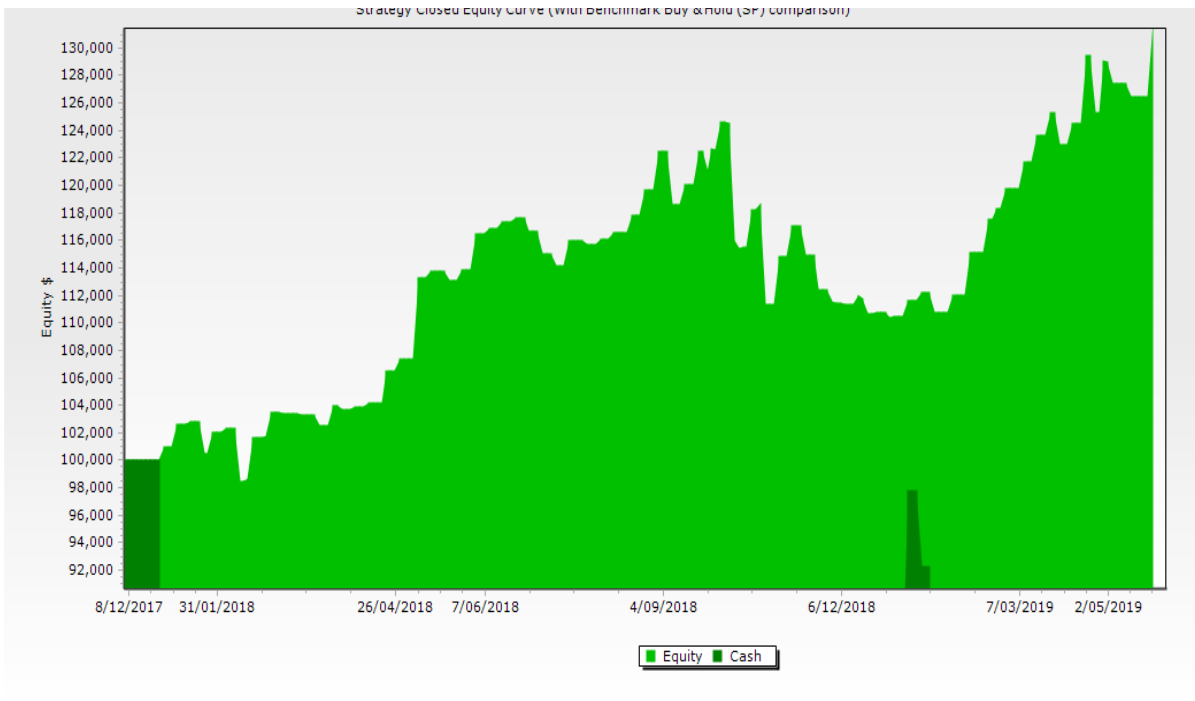


VOC and CHC are stocks currently held in the portfolio that were bought using the pull back buy rule. Those charts can be viewed in earlier portfolio PDF files on the website.

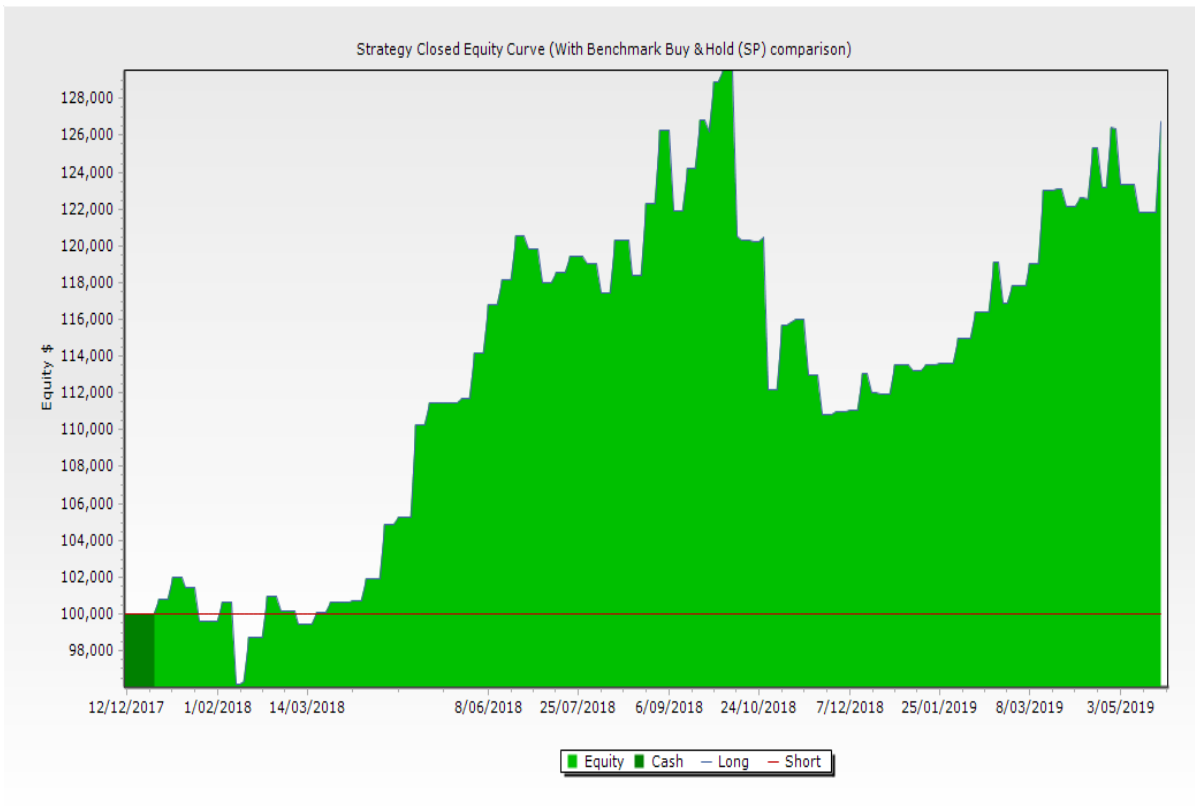


The chart above shows DDR signalling a buy in the eBook system, the buy price was 3.24. The chart below shows DDR signalling the same buy but using a momentum filter, you can see the buy was delayed and bought even higher than the original 52 week high signal. In this case the stock was bought at 3.42.

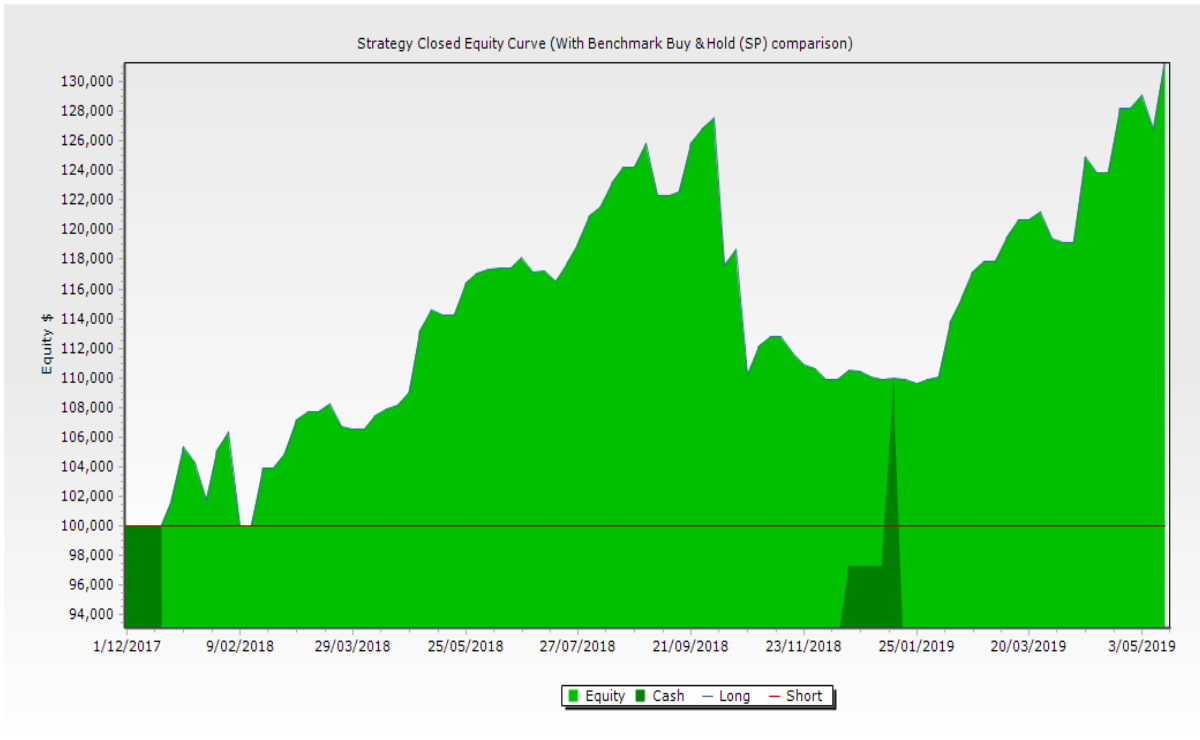




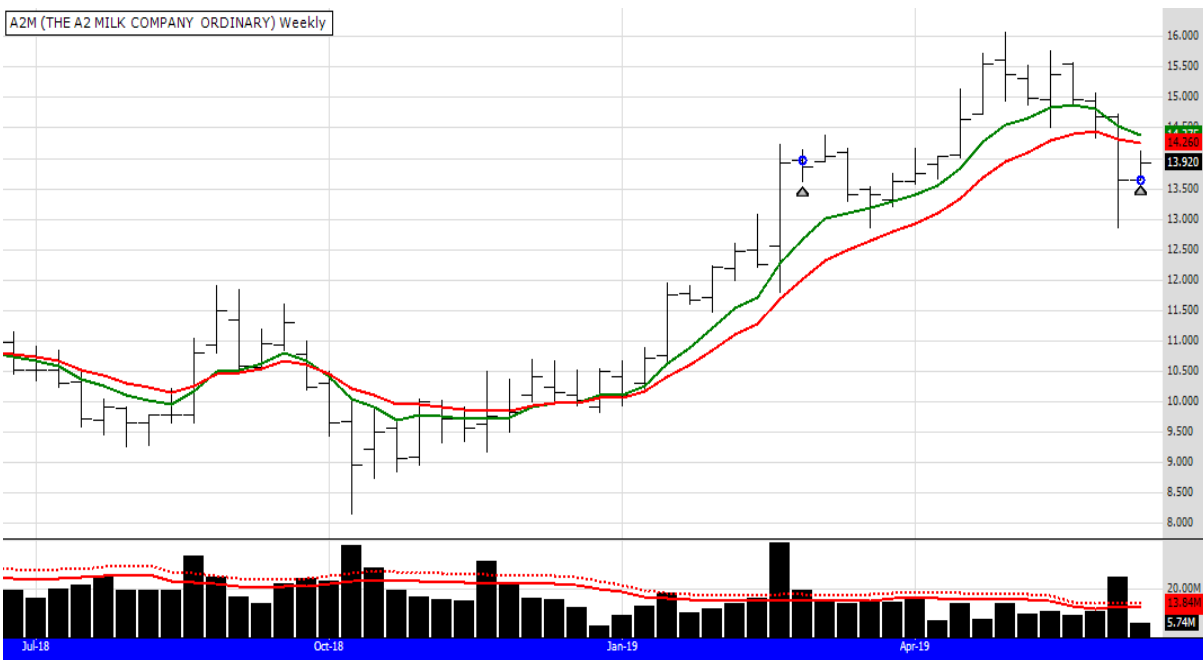
The chart above displays the eBook system using the Castle fundamental stock list  
 The system had a start date of December 2017 and the chart above was posted on the  
 17/05/2019



The chart above shows the Peters Portfolio system with the same fundamental stocks and  
 the same start date as the chart above. As stated many times the eBook system is outperforming.  
 Below is one more chart.



And finally the chart above displays the eBook system as described in the eBook. Using the ASX 300 stock list, with the same start date (December 2017) and finish date 17/5/19



A2M signalled a 52 week closing high in late Feb. The stock rose but has now fallen and pulled back below the original buy price. The trade is still "open" as the exit signal has not been triggered. The stock currently meets the rules for a "dip buy" and a second position has been purchased at the open on Tuesday the 11th June (the 10th was a public holiday)

































