

| <u>Code</u> | <u>Purchase Date</u> | <u>Purchase Price (\$)</u> | <u>Last (\$)</u> | <u>Units</u> | <u>Market Value (\$)</u> | <u>Profit / Loss (\$)</u> | <u>Change (%)</u> |
|--------------|----------------------|----------------------------|------------------|--------------|--------------------------|---------------------------|-------------------|
| <u>EAS</u> | 9/03/2020 | 0.945 | 0.725 | 2028 | 1,470.30 | -446.16 | -23.28 |
| Total | | | | | 1,470.30 | -446.16 | -23.28 |

| | |
|--|----------------|
| Cash held | 218,845 |
| Trading profit (current) | -446 |
| Add Dividends Received | 14,236 |
| Less brokerage | 2,379 |
| Total value adding portfolio value, cash and dividends, and minus brokerage is: | 235,014 |

Note: this system is different to the eBook system, please read carefully.

This system uses the 52 week high signal as its primary entry, in conjunction with a Bull filter.

The Bull filter rule is the weekly close of the XMD must be above the 24 EMA and the 6EMA. This is a slower more conservative filter than the eBook Bull filter, it is not a "better" filter but one I have been using for many years and it suits my objective. It was designed to be used in conjunction with a Bear filter, which I no longer use.

The 52 week high entry is used in conjunction with a momentum filter. The momentum filter measures stock speed, so some 52 week high signals will not be bought until the stock meets the momentum criteria.

An example of this can be seen below with the stock DDR.

Pullback entry: Rarely, some stocks are bought on a pullback from the 52 week high entry. Pullback entries normally happen when the market falls, some stocks never pullback after the original 52 week high signal. Pullbacks are bought only if it happens and if the portfolio has the cash to buy, which often it does not. The pullback entry does not make more profit for the system, however it can smooth the equity curve.

Examples of pullback entries can be seen in some charts displayed below.

Sizing: this system uses ATR sizing not percent of equity sizing like the eBook does.

There is no "better" sizing method. ATR sizing is my preference and suits my objective.

System exit: the exit is the same as the eBook system.

Variables within a system do not "make" a system or create outperformance.

What gives good results is discipline, sticking to a system for a period of time to test the rules as well as the operators performance, the most important factor.

Stock List: stocks to buy are sourced using my fundamental "Castle" criteria scan.

Information such as ATR sizing, dip buy rules, profit preserve sells, momentum criteria and the Castle stock selection criteria is withheld in this PDF file and provided to private clients only.

Recent trades

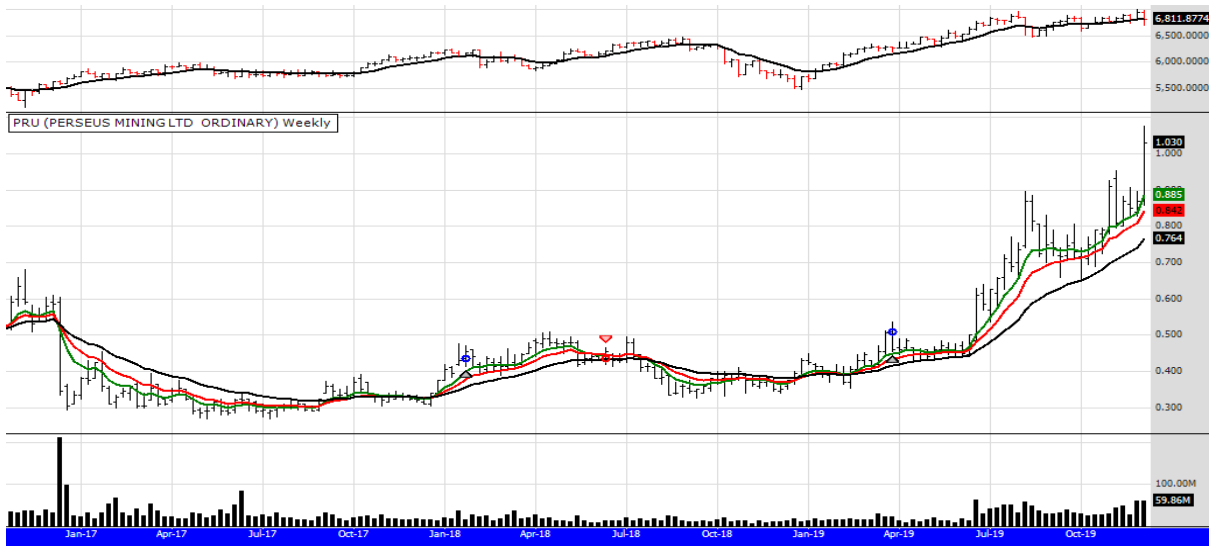
2442 of EAS were sold at 73 cents raising \$1783

ZIM were sold at 7.80 raising \$6084

SFC were sold at 10.74 raising \$11,535

Total cash raised \$19,402 which has been added to the cash total.

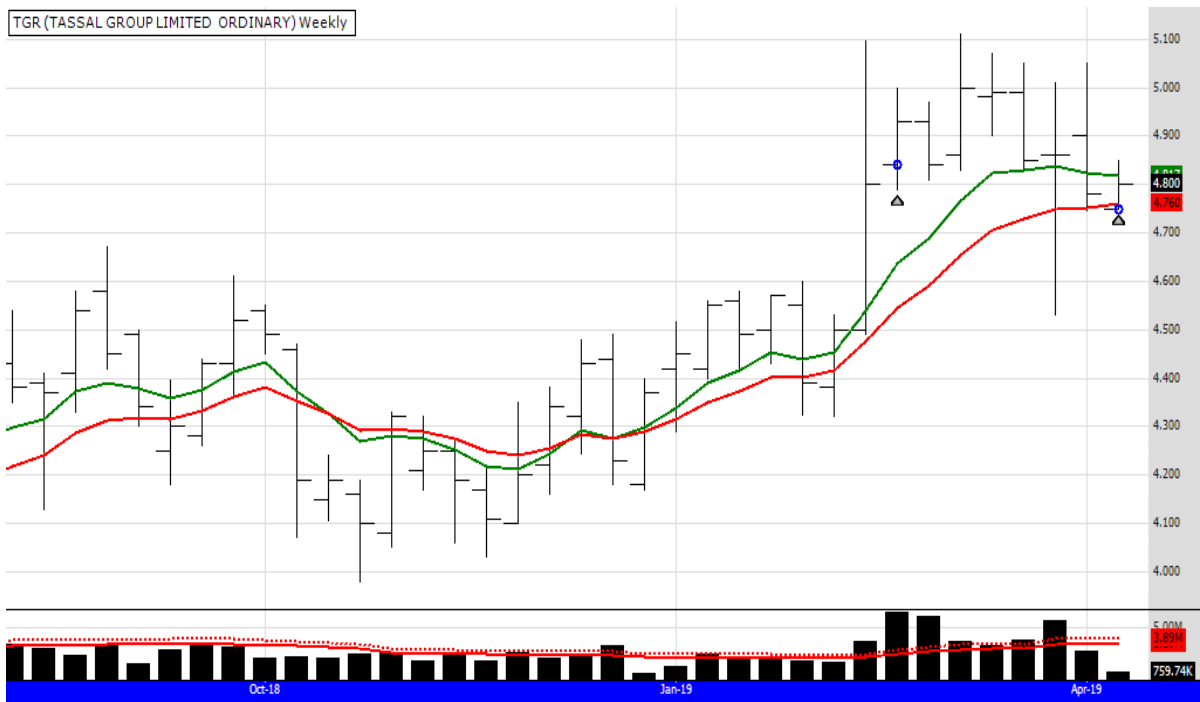
No dividends this week



After a trade in Jan 18 and a break even result, PRU signaled again in the eBook system in April 2019. Something I rarely do is buy an open trade, particularly one that is up 100%. The stock also does not meet my fundamental criteria. However, I have small exposure to the gold market and PRU is one of the few gold stocks in a strong uptrend, so the trade has been bought and the size of the trade determined by the stocks volatility, which as you can see is quite significant. The small chart above the stock price chart is a graph of the XAO.

Pull back entry rule example.

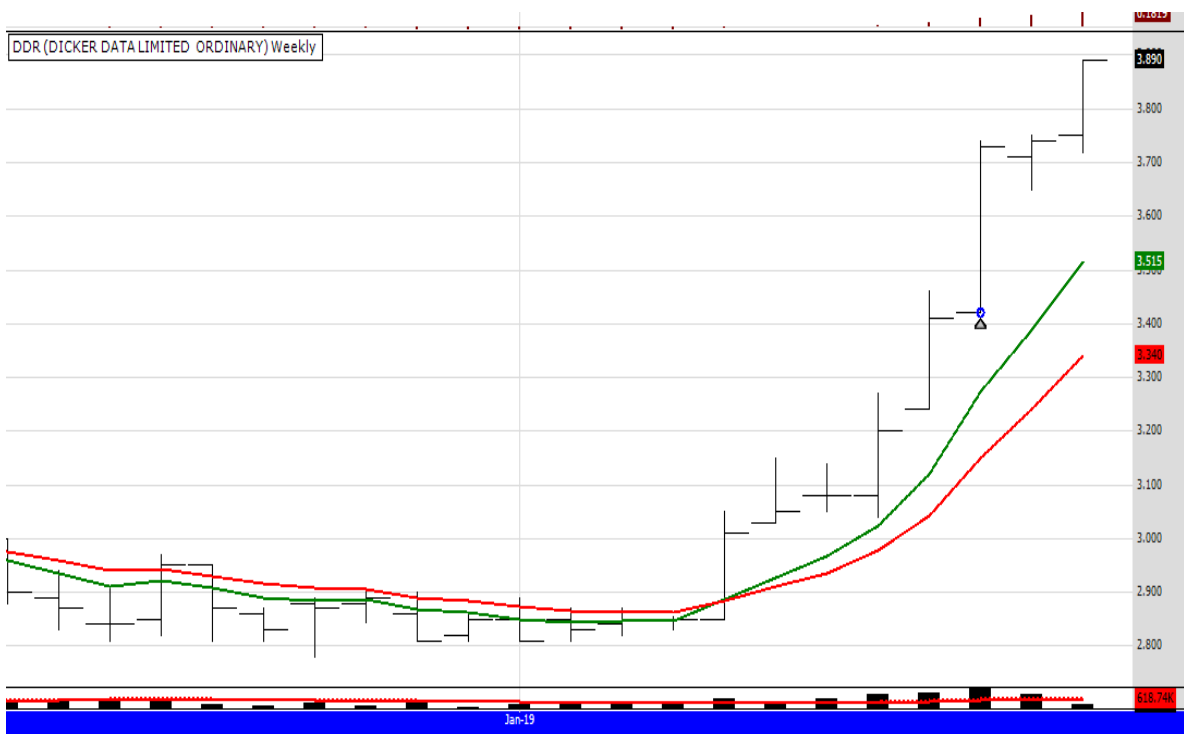
TGR is an example of the pullback entry rule.

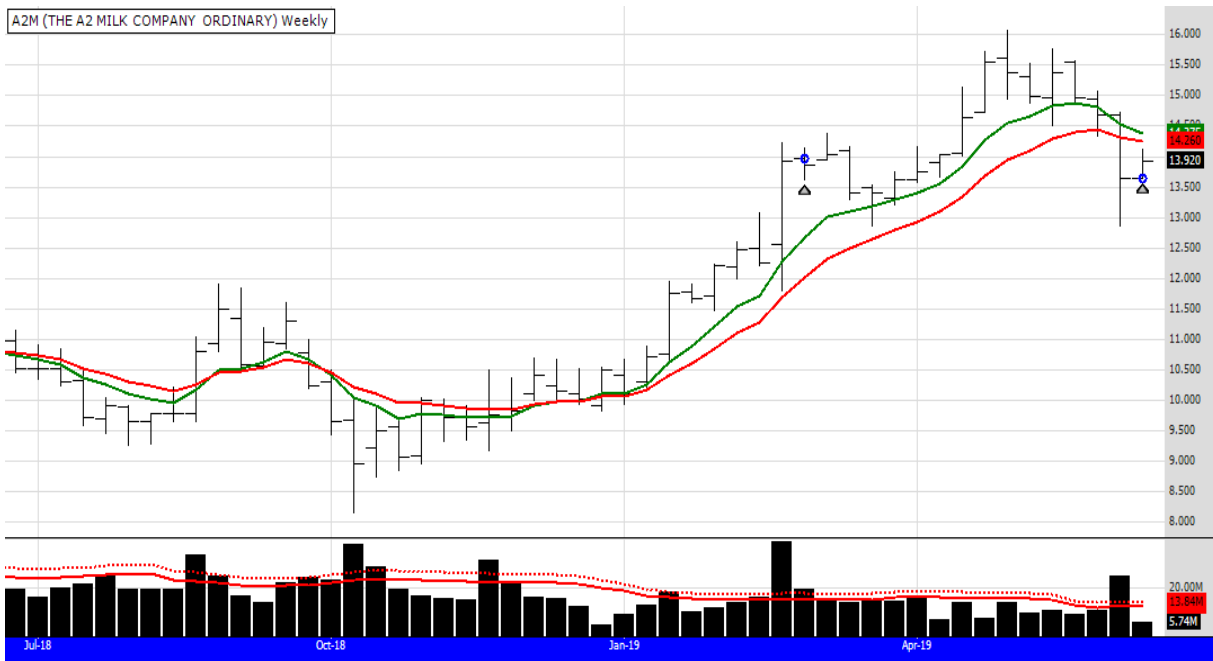


TGR signalled the 52 week closing high but went sideways and then dipped a little, meeting the rules of the dip buy and so the 2nd position was bought.

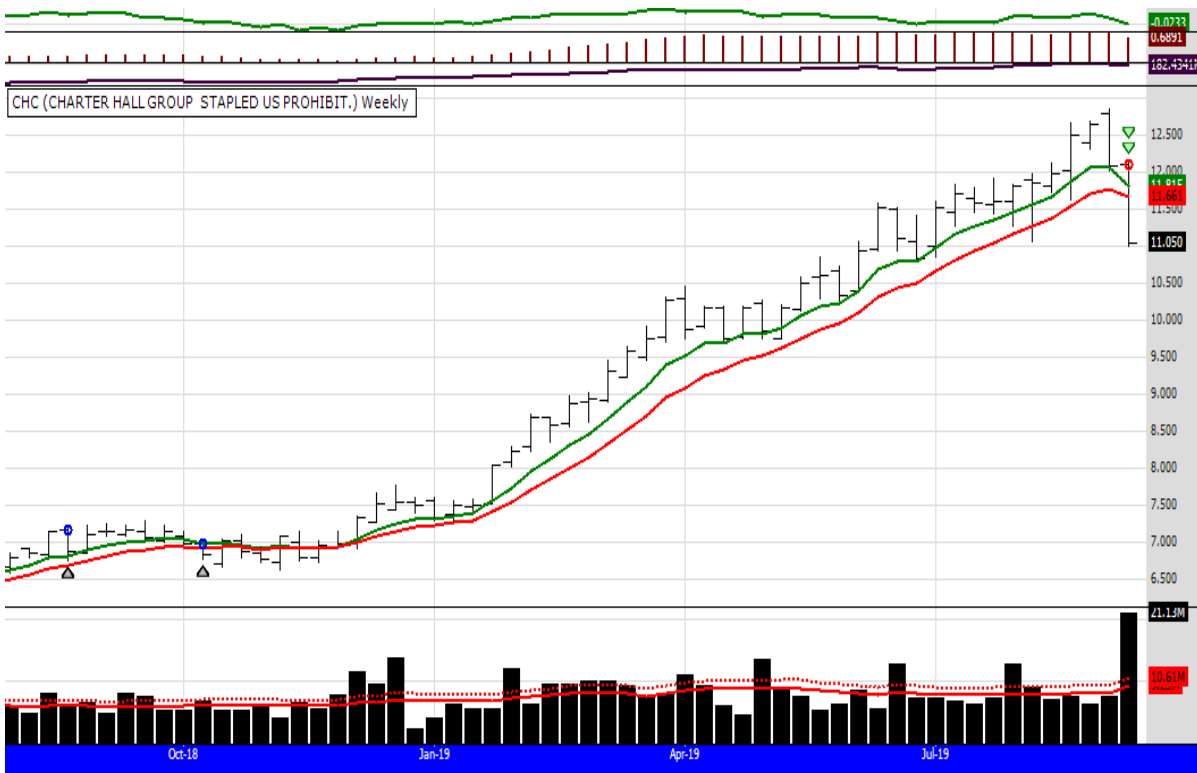


The chart above shows DDR signalling a buy in the eBook system, the buy price was 3.24
The chart below shows DDR signalling the same buy but using a momentum filter, you can see the buy was delayed and bought even higher than the original 52 week high signal. In this case, using the momentum filter, the stock was bought at 3.42

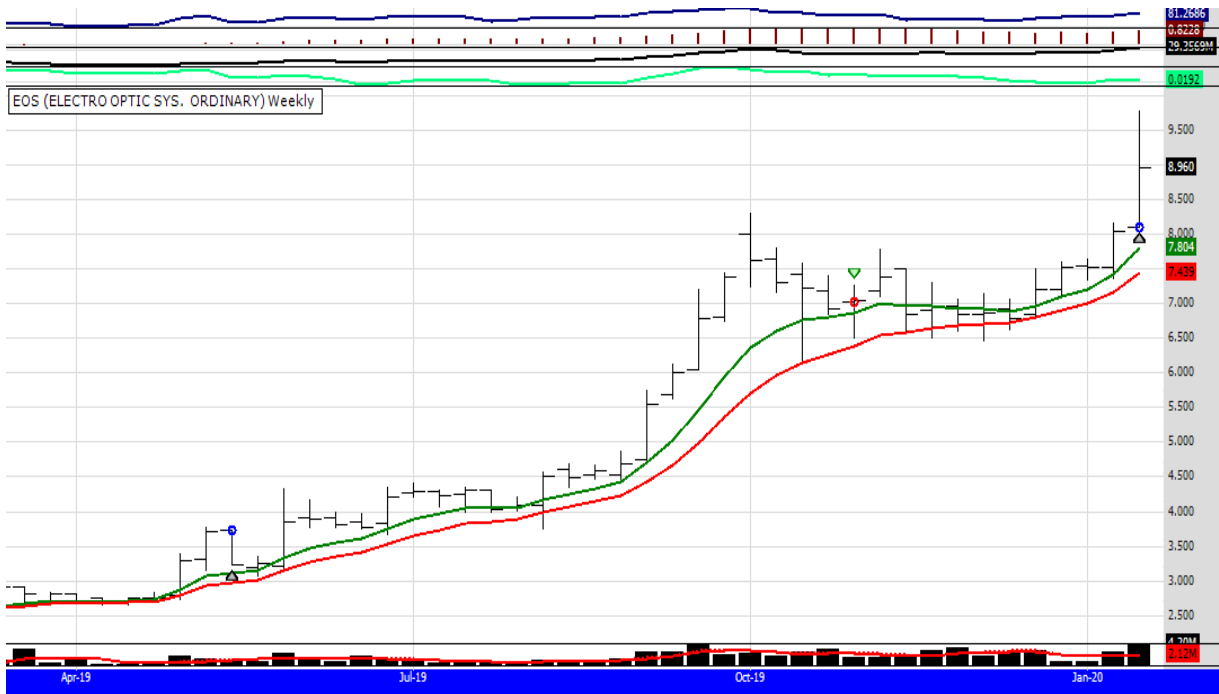




A2M signalled a 52 week closing high in late Feb. The stock rose but has now fallen and pulled back below the original buy price. The trade is still "open" as the exit signal has not been triggered. The stock currently meets the rules for a "dip buy" and a second position has been purchased at the open on Tuesday the 11th June (the 10th was a public holiday)
 Note: this stock was stopped out only 2 weeks later on the 24th June.



The stock above shows CHC being sold at a "Profit Preserve" signal. Profit Preserve signals are taught to clients in my coaching sessions or at my courses.



EOS is an open trade in the eBook system. I use a profit preserve signal (taught to clients) and the stock was sold back in Nov 2019. Using that exit means the stock has re signaled a buy last week, I bought the stock on Monday 13th Jan 2020
 Note: if you bought the trade using the eBook system, you should still have the trade as an open trade and be sitting on a profit of 140%.



On the 14th of Feb TPM signaled a 52 week high. It was bought the following Monday. The price dipped but is still an open trade as per the sell rules.

An option to buy the 2nd position (or it could be the first) was signalled and the trade was bought on Monday 2nd March 2020

There is another example below of the stock BRG, the dip buy bought on 2nd March 2020

